

MONTHLY MEMBERSHIP PROGRESS REPORT

LOCATION AUSTRALIA

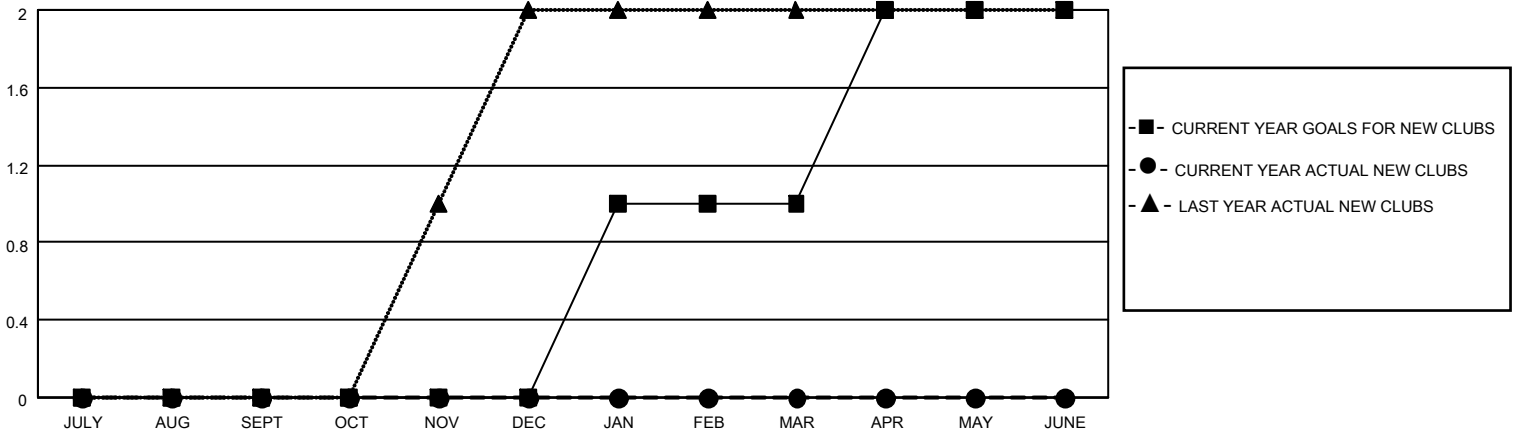
District 201N1

Results as of: 4/30/2022

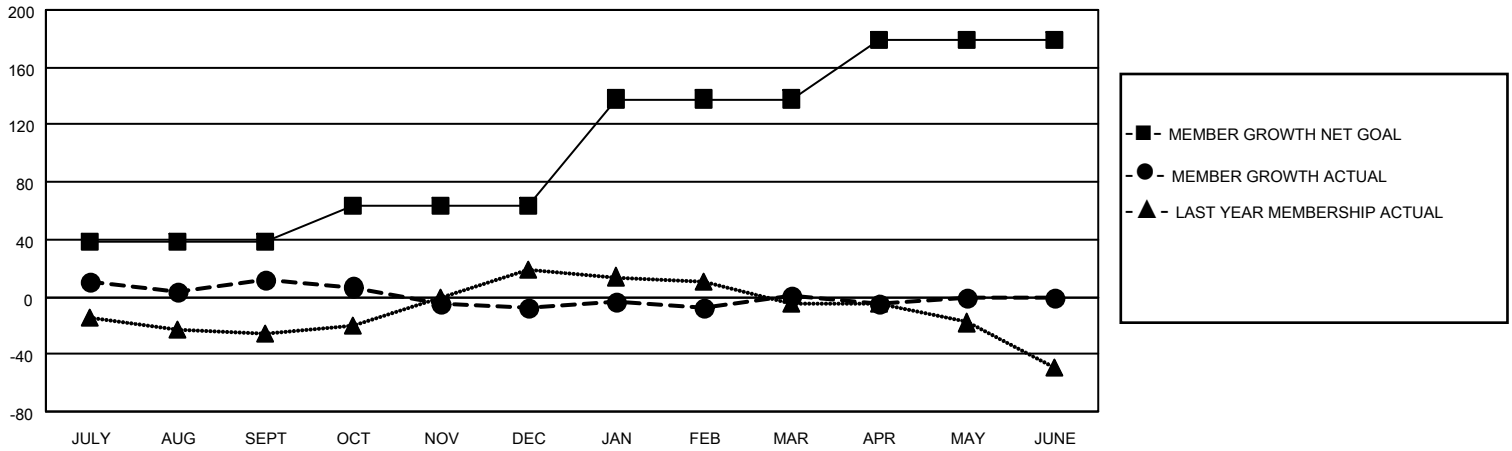
Clubs			
RESULTS FOR 2021-2022			
QUARTER	NEW CLUB GOAL	NEW CLUBS	DROPPED CLUBS
JULY/AUG/SEPT	0	0	0
OCT/NOV/DEC	0	0	0
JAN/FEB/MAR	1	0	0
APR/MAY/JUNE	1	0	0

Members			
RESULTS FOR 2021-2022			
QUARTER	MEMBER GROWTH NET GOAL	MEMBER GROWTH ACTUAL	DROPPED MEMBERS ACTUAL (including transfers)
JULY/AUG/SEPT	38	56	37
OCT/NOV/DEC	25	33	49
JAN/FEB/MAR	75	51	37
APR/MAY/JUNE	41	11	15

GOALS AND ACTUAL NEW CLUBS CUMULATIVE



GOALS AND ACTUAL MEMBERS CUMULATIVE



DROPPED CLUBS: 0

42 CLUBS OF 65 ADDED 1 OR MORE NEW MEMBERS

GENDER DISTRIBUTION

MALE	924 (66.38%)
FEMALE	468 (33.62%)
NON BINARY	0 (0.00%)
PREFER NOT TO ANSWER	0 (0.00%)

DROPPED MEMBERS

[CLICK HERE FOR CUMULATIVE MEMBERSHIP DATA](#)

DECEASED	15
CLUB CANCELLED	0
OTHER	123
TOTAL	138

TOTAL FAMILY UNIT MEMBERS	191
FAMILY MEMBERS PAYING HALF DUES	97